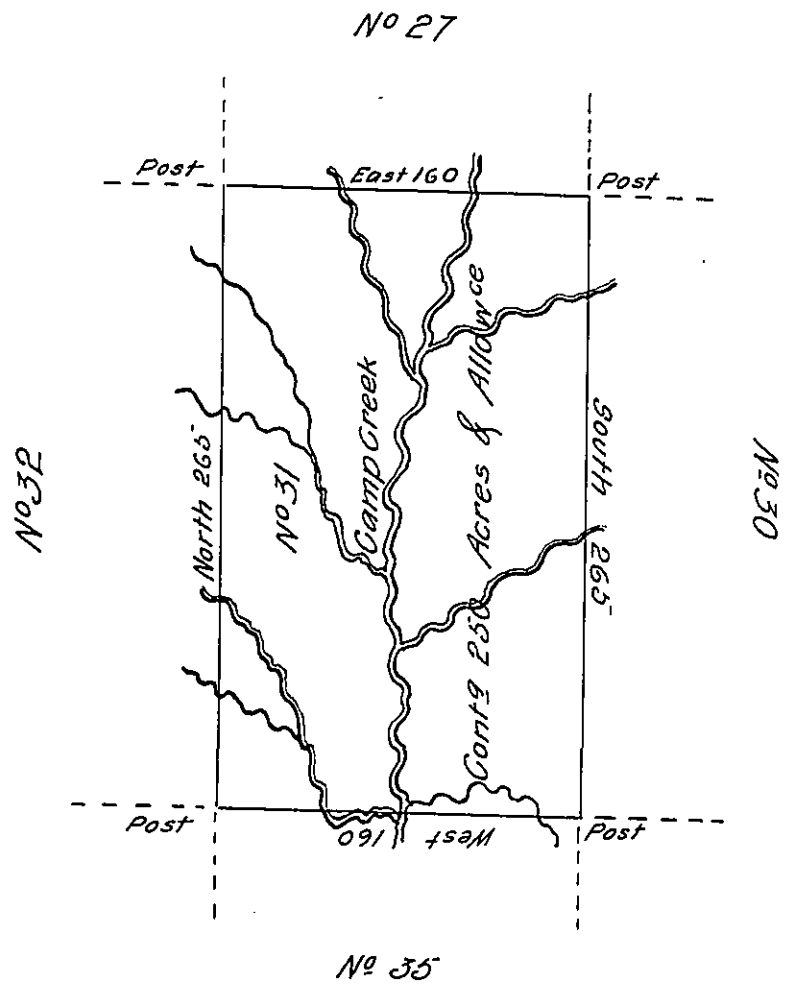


✓



*Situate on Camp Creek Between the Seventh & Eighth Parallel  
 in that Part of District No 3 to me allotted on the North side of the River Ohio  
 Being Part of the Land appropriated for the Purpose of Redeeming &  
 Paying off the Certificates of Depreciation &c. Surveyed in the Month of  
 June 1785 Pursuant to Instructions from Jno Lukens Esq<sup>r</sup> Surveyor Gen<sup>l</sup>  
 Dated at Philad<sup>a</sup> 5<sup>th</sup> March 1785.*

*Nat<sup>l</sup> Breading D.S.*

*IN TESTIMONY that the above is a copy of the original remaining on file in  
 the Department of Internal Affairs of Pennsylvania, made  
 conformably to an Act of Assembly approved the 16th day of  
 February, 1833, I have hereunto set my Hand and caused  
 the Seal of said Department to be affixed at Harrisburg,  
 this.....seventeenth.....day of.....May.....1905.*

*James D. [Signature]*  
 Secretary of Internal Affairs.